



provenance

HUNTLY - BENDIGO

LANDSCAPE GUIDELINES



WWW.PROVENANCEBENDIGO.COM

TABLE OF CONTENTS

03 LANDSCAPE STANDARDS

06 PLANT SPECIES LIST

1

LANDSCAPE STANDARDS

LANDSCAPE STANDARDS

- At least one tree per lot is required to be planted in the front yard. The tree must be installed with a minimum height of 2.0m at planting. Tree must be selected from the designated tree species list below.
- Trees installed must have a minimum mature height of 4.0m.
- The front garden should contain free draining surfaces such as:
 - Grass
 - Garden beds containing trees, shrubs, tufting plants
 - Ground covers
 - Pebbles, Lilydale Topping or similar
- No more than 40% of the front garden can be impervious.
- 30% of the front garden area is to be planted garden beds.
- Consideration should be given to the cultivation of existing soil in the garden beds to a 200mm depth and the addition of imported topsoil and fertiliser to the garden bed.
- Garden beds must have 80mm layer of mulch.
- All garden bed areas within the front yard should be edged using brick, timber, or steel edges.
- The nature strip(s) outside the lot is/are included as part of the works required for successful completion of the landscaping.
- Nature strips must achieve neat and even grass coverage and any damage caused during construction of the dwelling must be rectified.
- A landscape plan must be approved prior to the commencement of construction.
- Landscaping should be maintained to appear clean, tidy and healthy to maintain the neighbourhood character.
- Plant species must be selected from the attached plant species list for the front yard only.
- Investor lots are to provide within the front landscape area, drip irrigation to all gardens beds and pop up sprinklers to all grassed areas. These are all to be connected to automatic timers with an appropriate watering schedule to ensure that the plants received the correct amount of water at the right time.

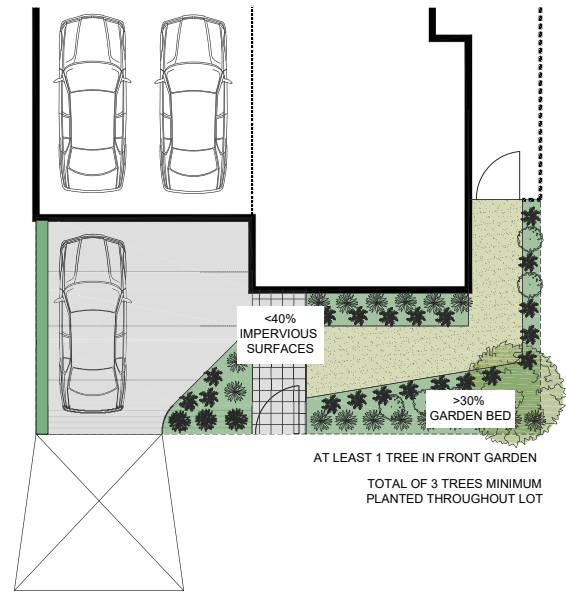


Figure 1. Impervious surfaces diagram

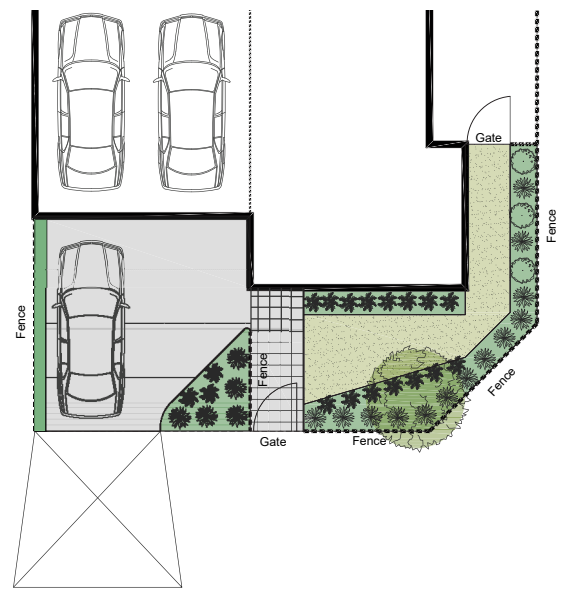


Figure 2. Indicative Corner Lot Front Garden Design

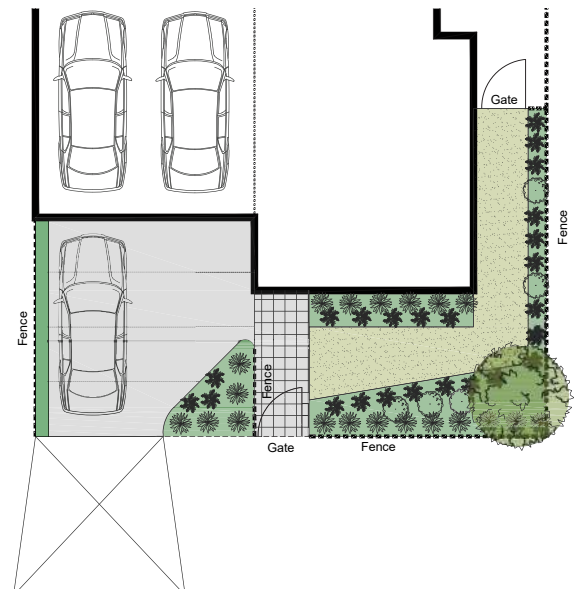


Figure 3. Indicative Standard Lot Front Garden Design

BUILDING ADVICE

- For the removal, growth or maintenance of trees near the home, the builder should be notified prior to signing the building contract. The builder will then inform the engineer of any requests, which will dictate the design of the home's footings.
- The type and grouping of trees or shrubs will have influence on the soil's moisture conditions. To ensure minimal damage to the footings of the home, please seek professional advise before planting.
- Location of tree within front garden should be located away from building house, and located within front garden bed. For further advice seek a landscape contractor.
- Trees planted in front garden must be selected from the suitable tree species list unless otherwise approved by the developer.

NOTE:

Width of planting hole is:
 3 x root ball diameter in compacted soil.
 2 x root ball diameter minimum in all others.

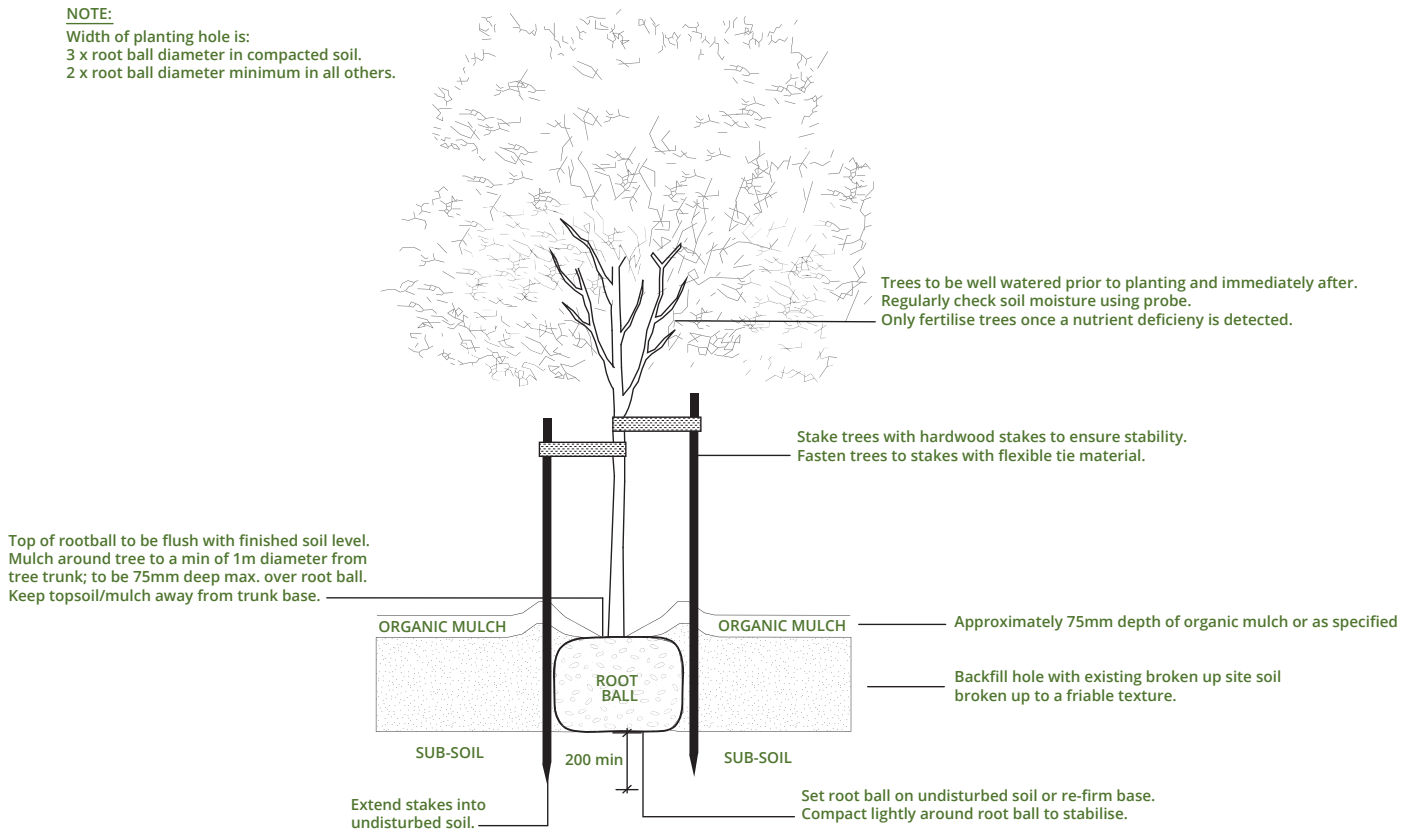


Figure 4. Indicative Typical Tree Planting Detail



2

PLANT SPECIES LIST



TREES

COMMON NAME	SPECIES NAME
Lightwood Wattle	Acacia implexa
Blackwood Wattle	Acacia melanoxylon
Pink Flowering Horse Chestnut	Aesculus x carnea
Willow Myrtle	Agonis flexuosa
Smooth-barked Apple-myrtle	Angophora costata
Dwarf Apple-myrtle	Angophora hispida
Irish Strawberry Tree	Arbutus unedo
Silver Banksia	Banksia marginata
Kurrajong Tree	Brachychiton populensis
Carob Tree	Ceratonia siliqua
Forest Pansy	Cercis canadensis 'Forest Pansy'
Judas Tree	Cercis siliquastrum
Eureka Lemon	Citrus limon 'Eureka Lemon'
Lisbon Lemon	Citrus limon 'Lisbon Lemon'
Emperor Mandarin	Citrus reticulata 'Emperor Mandarin'
Valencia Orange	Citrus sinensis 'Valencia Orange'
Dwarf Lemon-scented Gum	Corymbia citriodora 'Scentuous'
Flowering Gum (pink flower)	Corymbia ficifolia 'Calypso'
Flowering Gum (pink flower)	Corymbia ficifolia 'Summer Beauty'
Flowering Gum (orange flower)	Eucalyptus ficifolia 'Wild Sunset'
Flowering Gum (red flower)	Eucalyptus ficifolia 'Wildfire'
Silver Princess	Eucalyptus caesia 'Silver Princess'
Yellow Gum	Eucalyptus leucoxydon
Dwarf Yellow Gum	Eucalyptus leucoxydon 'Euky Dwarf'
Red Gum	Eucalyptus polyanthemus
Evergreen Ash	Fraxinus griffithii
Honey Locust	Gleditsia triacanthos
Crepe Myrtle (Pink Flower)	Lagerstoemia indica 'Biloxi'
Crepe Myrtle (White Flower)	Lagerstoemia indica 'Natchez'
Crepe Myrtle (Pink Flower)	Lagerstoemia indica 'Sioux'
Crepe Myrtle (Purple Flower)	Lagerstoemia indica x fauriei 'Lipan'
Crepe Myrtle (red flower)	Lagerstoemia indica x fauriei 'Tuscarora'
Evergreen Magnolia	Magnolia grandiflora 'Teddy Bear'
Granny Smith Apple	Malus domestica 'Granny Smith'
Japanese Crab Apple	Malus floribunda
Iowa Crab Apple	Malus ioensis 'Plena'
Crab Apple	Malus yunnanensis 'Wynchwood Ruby'
Kalamatta Olive	Olea europaea 'Kalamatta'
Manzanillo Olive	Olea europaea 'Manzanillo'
Chinese Pistacio	Pistacia chinensis
Ornamental Pear	Pyrus calleryana 'Aristocrat'
Ornamental Pear	Pyrus calleryana 'Cleveland Select'
Ornamental Pear	Pyrus calleryana 'Winter Glow'
Ornamental Snow Pear	Pyrus nivalis
Chinese Elm	Ulmus parvifolia
Japanese Elm	Zelkova serrata

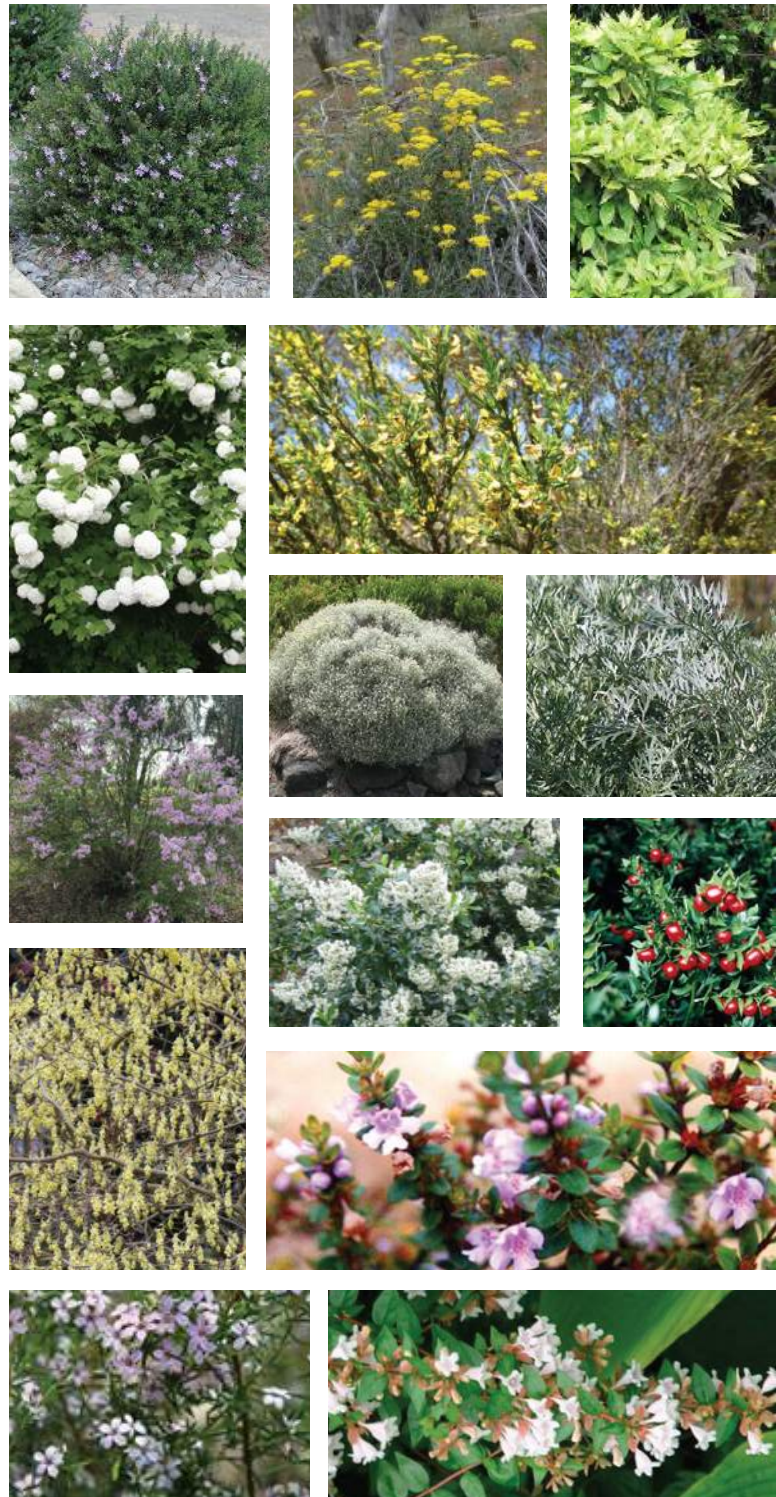
ALL PLANTINGS WITHIN PROVENANCE ESTATE
MUST BE SELECTED FROM THE APPROVED PLANT
SPECIES LIST



SHRUBS

COMMON NAME	SPECIES NAME
Wirilda	<i>Acacia retinodes</i>
Sweet Bursaria	<i>Bursaria spinosa</i>
Mexican Orange Blossom	<i>Choisya ternata</i>
Smoke Tree	<i>Cotinus coggygia</i>
Hedge Wattle	<i>Acacia paradoxa</i>
Prickly Moses	<i>Acacia verticillata</i>
Black Sheoak	<i>Allocasuarina littoralis</i>
Cauliflower bush	<i>Cassinia longifolia</i>
Common Correa	<i>Correa reflexa</i>
Giant Hop-bush	<i>Dodonaea viscosa</i>
Hop Goodenia	<i>Goodenia ovata</i>
Needlewood	<i>Hakea decurrens</i>
Austral Indigo	<i>Indigofera australis</i>
Heath/Silky Tea Tree	<i>Leptospermum myrsinoides</i>
Tree Violet	<i>Melicytus dentata</i>
Fragrant Saltbush	<i>Rhagodia parabolica</i>
Desert Cassia	<i>Senna artemisioides</i>
Golden Spray	<i>Viminaria juncea</i>
Long-leaf Wax-flower	<i>Eriostemon myoporoides</i>
Snowy Mint-bush	<i>Prostanthera nivea</i>
Native/Coast Rosemary	<i>Westringia fruticosa</i>
Abelia	<i>Abelia x grandiflora</i>
Gold Dust Plant	<i>Aucuba japonica</i>
Blue Blossom	<i>Ceanothus</i> spp.
Witch Hazel	<i>Corylopsis spicata</i>
Escallonia	<i>Escallonia</i> spp.
Snowball	<i>Viburnum opulus</i> 'Sterile'
Fringe Myrtle	<i>Calytrix tetragona</i>
Drooping Cassinia	<i>Cassinia arcuata</i>
Spreading Eutaxia	<i>Eutaxia diffusa</i>
Silver Nugget	<i>Leucophyta brownii</i>
Wingless Bluebush	<i>Maireana enchylaenoides</i>
Grey Everlasting	<i>Ozothamnus obcordatus</i>
Common Heath	<i>Epacris impressa</i>
Silky Eremophila	<i>Eremophila nivea</i>
Native Rosemary	<i>Westringia glabra</i>
Silverwood / Wormwood	<i>Artemisia aborescens</i>
Cast Iron Plant	<i>Aspidistra elatior</i>
Diosma	<i>Coleonema pulchellum</i>
Box-leaf Hebe	<i>Hebe buxifolia</i>
Cherry Pie	<i>Heliotropium arborescens</i>
Red leaf Photinia	<i>Photinia glabra</i>
Butcher's Broom	<i>Ruscus hypoglossum</i>
Snake Plant	<i>Sansevieria trifasciata</i>
Persian Lilac	<i>Syringa</i> spp.

A LANDSCAPE PLAN MUST BE APPROVED PRIOR TO THE COMMENCEMENT OF CONSTRUCTION.



GROUND COVERS

COMMON NAME	SPECIES NAME
Cranberry Heath	<i>Astroloma humifusum</i>
Creeping Bossiaea	<i>Bossiaea prostrata</i>
Tufted Burr Daisy	<i>Calotis scapigera</i>
Pink Bindweed	<i>Convolvulus erubescens</i>
Small-leaved Eutaxia	<i>Eutaxia microphylla</i>
Running Postman	<i>Kennedia prostrata</i>
Wingarra	<i>Lomandra confertifolia</i> subsp.
Seascape	<i>Lomandra confertifolia</i> subsp. <i>rubiginosa</i>
Catlins Giant Bugle	<i>Ajuga reptans</i>
Horizontal Juniper	<i>Juniperus horizontalis</i>



CLIMBERS

COMMON NAME	SPECIES NAME
Small-leaved Clematis	<i>Clematis microphylla</i>
Twining Glycine	<i>Glycine clandestina</i>
Variable Glycine	<i>Glycine tabacina</i>
Small-leaf Bramble	<i>Rubus parvifolius</i>
Purple Coral Pea	<i>Hardenbergia violacea</i>
Snake Vine	<i>Hibbertia scandens</i>
Chinese Wisteria	<i>Wisteria sinensis</i>
Chinese Star Jasmine	<i>Trachelospermum jasminoides</i>



GRASS

COMMON NAME	SPECIES NAME
Common Wallaby-grass	<i>Austrodanthonia caespitosa</i>
Brown-back Wallaby-grass	<i>Austrodanthonia duttoniana</i>
Stiped Wallaby-grass	<i>Austrodanthonia racemosa</i>
Bristly Wallaby-grass	<i>Austrodanthonia setacea</i>
Kneed Spear-grass	<i>Austrostipa bigeniculata</i>
Supple Spear-grass	<i>Austrostipa mollis</i>
Knotty Spear-grass	<i>Austrostipa nodosa</i>
Rough Spear-grass	<i>Austrostipa scabra</i>
Corkscrew Spear-grass	<i>Austrostipa setacea</i>
Red-leg Grass	<i>Bothriochloa macra</i>
Tall Sedge	<i>Carex appressa</i>
Common Sedge	<i>Carex tereticaulis</i>



LOCATION OF TREES WITHIN GARDEN SHOULD BE LOCATED AWAY FROM BUILDING HOUSE, AND LOCATED WITHIN FRONT GARDEN BED. FOR FURTHER ADVICE SEEK A LANDSCAPE CONTRACTOR.

GRASS (CONT.)

COMMON NAME	SPECIES NAME
Reed Bent-grass	<i>Deyeuxia quadrisetata</i>
Silky Blue Grass	<i>Dichanthium sericeum</i>
Long-hair Plume-grass	<i>Dichelachne crenata</i>
Common Wheat-grass	<i>Elymus scaber</i>
Niggerheads	<i>Enneapogon nigricans</i>
Wattle Mat-rush	<i>Lomandra filiformis</i>
Spiny-headed Mat-rush	<i>Lomandra longifolia</i>
Weeping Grass	<i>Microlaena stipoides</i>
Common Tussock-grass	<i>Poa labillardierei</i>
Grey Tussock-grass	<i>Poa sieberiana</i>
Slender Tussock Grass	<i>Poa tenera</i>
Kangaroo Grass	<i>Themeda triandra</i>
Rigid Panic	<i>Whalleya prolata</i>
Common Blown-grass	<i>Lachnagrostis filiformis</i> var. <i>filiformis</i>
New Zealand Flax	<i>Phormium tenax</i>
Yucca	<i>Yucca</i> spp.

PERENNIAL HERB

COMMON NAME	SPECIES NAME
Lemon Beauty-heads	<i>Calocephalus citreus</i>
Blue Dampiera	<i>Dampiera stricta</i>
Knobby Club-sedge	<i>Ficinia nodosa</i>
Cut-leaf Goodenia	<i>Goodenia pinnatifida</i>
Scaly Buttons	<i>Leptorhynchus squamatus</i>
Wild Flax	<i>Linum marginale</i>
Austral Stork's Bill	<i>Pelargonium australe</i>
Magenta Stork's Bill	<i>Pelargonium rodneyanum</i>
Curved Rice-flower	<i>Pimelea curviflora</i>
Common Rice-flower	<i>Pimelea humilis</i>
Common New Holland Daisy	<i>Vittadinia cuneata</i>
Yellow Paper Daisy	<i>Xerochrysum viscosum</i>
Common Dampiera	<i>Dampiera linearis</i>
Wild Iris	<i>Diets bicolor</i>
Silver Shield	<i>Plectranthus argentatum</i>
Billy Buttons	<i>Pycnosorus globosus</i>
Chamomile Sunray	<i>Rhodanthe anthemoides</i>
Silver Bush	<i>Convolvulus cneorum</i>
Silver Groundsel	<i>Senecio cineraria</i>

THE TYPE AND GROUPING OF TREES OR SHRUBS WILL HAVE INFLUENCE ON THE SOIL'S MOISTURE CONDITIONS. TO ENSURE MINIMAL DAMAGE TO THE FOOTINGS OF THE HOME, PLEASE SEEK PROFESSIONAL ADVISE BEFORE PLANTING.

